

PRESSURE SWITCH EXPLOSION PROOF TYPE PSA2100X

**CLASS I, GROUPS A, B, C, D;
CLASS II, GROUPS E, F, G;
NEMA 4X**

**Proof Pressure to 1000psi
Adjustable Ranges: 2~100psi
Temperature: -25 to 205°C
Dead Band: Adjustable**

The New-Flow PSA2100X, an explosion proof pressure switch, is designed to be used in control systems. PSA2100X has high set point repeatability and narrow dead band features. There are a variety of range selections available upon request. Easily adjusted to the set point, no special tools needed!

Technical Data

Switch Data: 20Amp @ 125, 250 or 480 VAC

Housing: die cast aluminum alloy with paint

Conduit Connection: ¾" or ½" NPT Female

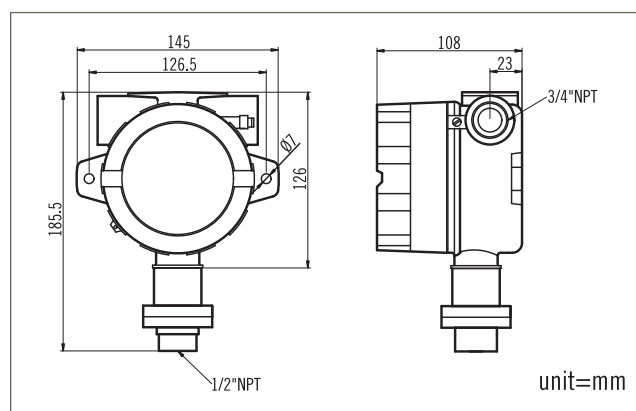
Pressure Element: welded type diaphragm

Process Materials: wetted parts are all in SS316

Process Connection: ½" or ¼" NPT Female

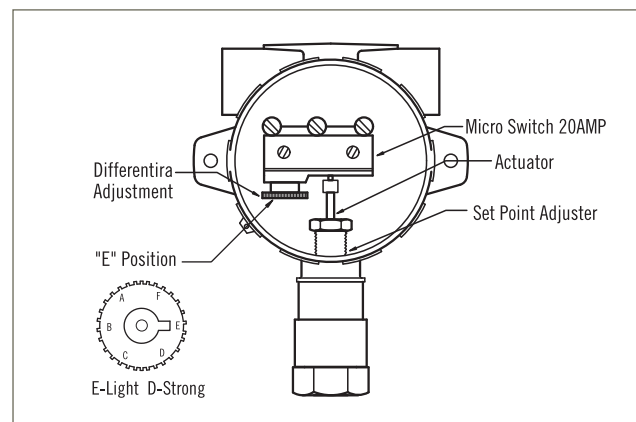


Dimensions



Range Selection Table

Code	Pressure Range	Adjustable Dead Band at "E" Position	Maximum Pressure Proof
04R	2~12psi	1.2~3	1000psi
10R	2~16psi	1.6~4	1000psi
20R	2~20psi	2~5	1000psi
30R	3~28psi	2.8~7	1000psi
40R	7~100psi	9.9~28.4	1000psi



Ordering Information

PSA2100X	Code	Range									
		04R	2~12psi	10R	2~16psi	20R	2~20psi	30R	3~28psi	40R	7~100 psi
		Code	Wetted Material								
		A	SS316								
		Code	Process Connection								
			(1) ½" NPT Female (2) ¼" NPT Female								
		Code	Conduit Connection								
			(E) ¾" NPT Female (F) ½" NPT Female, standard								
		Code	Switch Form								
		1	One SPDT								
PSA2100X											Complete Ordering Code