

# FLOW SIGHT GLASS GAUGE

**NAH-1** – WITHOUT ROTOR

**NAH-2** – WITH ROTOR

NAH are used for mounting in pipes for fluids. The instruments are equipped with female threads at inlet and outlet and can be supplied with either brass or stainless steel fittings.

## Technical Data

### Material:

Sight glass gauge body: Polycarbonate (P.C), Polysulfone (PSU) available  
O-rings: Viton

Rotor: POM, PTFE available

Rotor guide: SS316

Thread connection: SS316

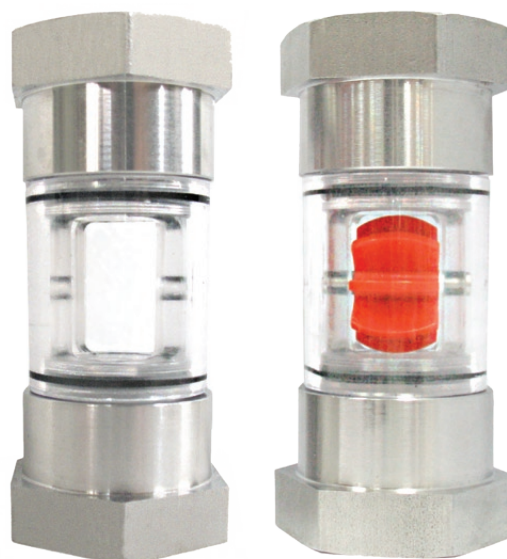
Viscosity: 1~150 mm<sup>2</sup>/s

Indication Range: minimum 0.4~4 L/Min; maximum 8~100 L/Min for water

Max. Pressure: PC body: 8bar; PSU body: 12bar

Max. Temperature: PC body: -5°C~+80°C; PSU body: -5°C~+120°C

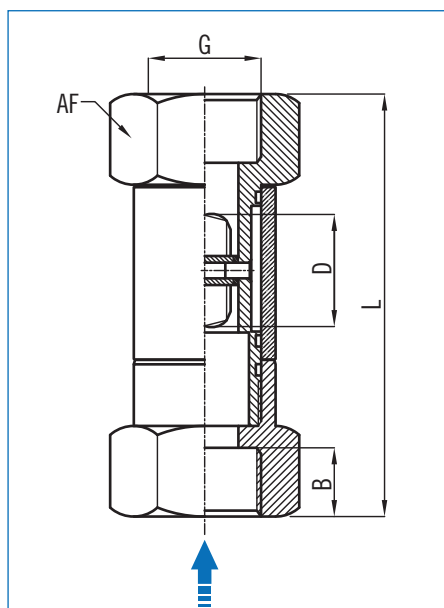
Connection Size: ¼", ⅜", ½", ¾", 1", 1¼", 1½" female PF or NPT available



NAH-1

NAH-2

## Dimensions



unit=mm

Size	B	L		AF	
		NPT	PF	NPT	PF
¼"	-	87	87	30	30
⅜"	-	87	87	30	30
½"	-	112	112	40	40
¾"	-	112	112	40	40
1"	-	112	122	40	48

## Range Table

PF/NPT	With Rotor	Without Rotor
¼"	0.4~4 L/Min	8.3 L/Min
⅜"	0.6~8 L/Min	11.1 L/Min
½"	1~12 L/Min	31.5 L/Min
¾"	1~25 L/Min	38.0 L/Min
1"	1.6~40 L/Min	36.5 L/Min

## Ordering Information

NAH	Code	Model
	1	Without Rotor
	2	With Rotor
	Code Sight Glass Gauge Body Material	
	1	P.C
	2	PSU
	Code Connection Size	
	(1) ¼" (2) ⅜" (3) ½" (4) ¾" (5) 1"	
	Code Connection Rating-female	
	1	NPT
	2	PF
	Code O-Ring Material	
	V Viton	
	Code Rotor Material	
	1	POM
	2	PTFE
	3	Without Rotor (NAH-1 only)