

FS20

FLOW SWITCH FS20

FS20R & FS20 Din Weather Proof
FS20X – Explosion Proof



FS-20R



FS-20 DIN



FS-20X

Technical Data

Size: From 1/2" to 1"

Service: For "Non-corrosive" liquid fluid available

*In general, We DON't recommend using FS20 for the seawater application! But, if it is necessary, please let us know, we can customize the special magnet with lining to match up!

Material: Wetted parts 316 stainless steel

Temperature Limit: -20 to 150°C

Pressure Limit: 7.0 MPa (70 kg/cm²)

Enclosure Housing: FS20R- Weather proof
FS20 Din- Weather proof
FS20X- Explosion proof

Switch Function: SPDT micro switch

Switch Rating: 3A/250VAC, 3A/30VDC, 0.4A/125VDC

Conduit Connection: Female 1/2", 3/4" G, NPT, and M20xP1.5 or M25xP1.5 available

Patent No.

M290238

Approvals:



Switches with UL & CSA Recognized and File No. E41515.

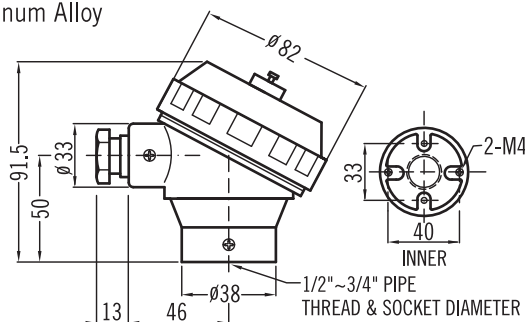
CAUTION.

If using the FS20 for the Emergency Shower, please contact with the manufacturer at the first!!

Head Type

FS20R – Weather Proof IP68

Material: Aluminum Alloy



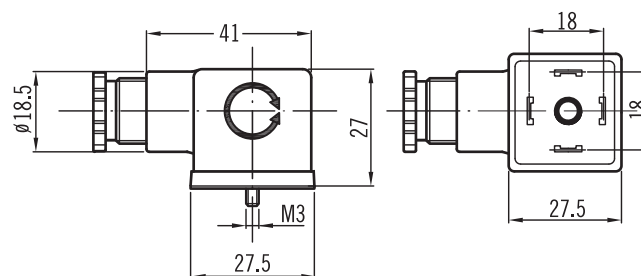
unit=mm

FS20 Din – Weather Proof IP65

Material: Thermoplastic Rubber

Cable Gland: PG9

Connector: DIN43650



unit=mm

FS20X – Explosion Proof

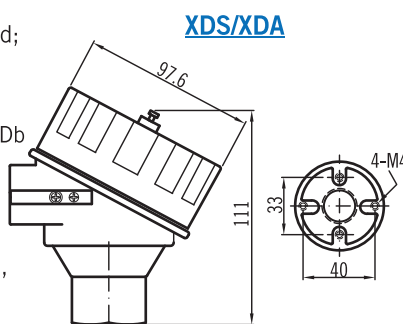
Material: Aluminum Alloy- standard; SS316 available

ATEX Approvals: II 2G D

Ex db IIC T6 Gb

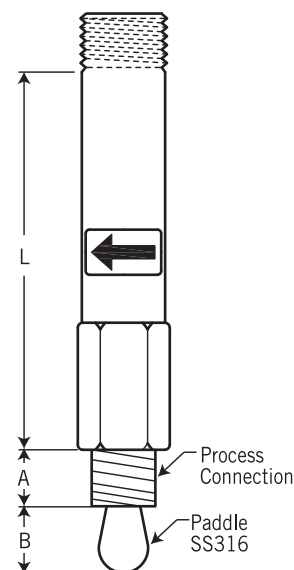
Ex tb IIIC T100°C Db

FM Approvals: XP/II/1/ABCD/T6; DIP/II, III/1/EFG/T6; Type 4X, Explosion proof for Class I, Division 1, Groups A,B,C and D; and dust-ignition proof for class II, III, Division 1, Groups E,F and G, hazardous (classified) locations; indoor/outdoor (NEMA Type 4X).



unit=mm

Dimensions

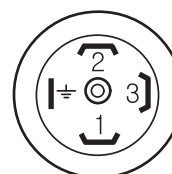
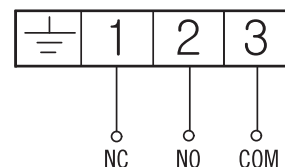


unit=mm

Size	L	A	B
1/2"	90	19	27
3/4"	90	20	32
1"	90	21	42

Connection Diagram

3-Wire



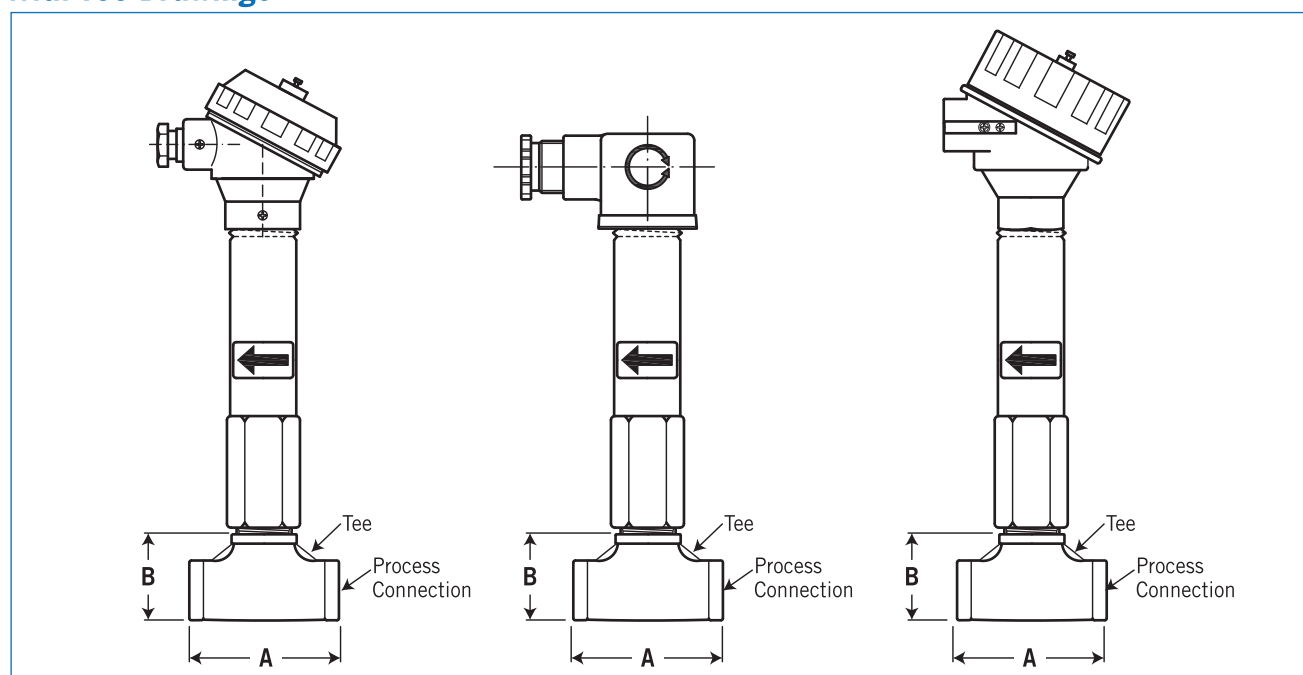
DIN

Flow Rate Table

Process Connection (Female with Tee Fitting)	Flow Rates Required Water at 25°C		Dimensions for Tee		
	Acuate (on) ℓ/hour	Deacuate (off) ℓ/hour	A (mm)	B (mm)	REMARK
½"NPT	380,...460	150,...210	52	45	---
¾"NPT 1"NPT	550,...610	140,...240	64	47	¾" Paddle & ¾" Tee
			67	49	¾" Paddle & 1" Tee
1"NPT	930,...1010	750,...780	72	49	---

NOTE. The Flow Rate Table is only for reference. Please consult with manufacturer for the accurate flow rate if without tee fitting.

With Tee Drawings



Ordering Information

Model	Code	Type
	FS-20R	Weather Proof Type
	FS-20 DIN	Weather Proof Type
	FS-20X	Explosion Proof Type
		Code Process Connection
	A	With Tee (Material: SS316) (1) ½"NPT (2) ¾"NPT (3) 1"NPT (4) 1"NPT (but ¾" paddle)
	B	Without Tee (4) ½"NPT (5) ¾"NPT (6) 1"NPT
		Code Head Housing Type
		Weather Proof (1) HN (only for FS-20R) (2) DIN 43650 (only for FS-20 DIN) (0) Option
		Explosion Proof (3) XDS (4) XDA (0) Option
		Code Conduit Size
		(1) ½"NPT(F), standard (2) PG9 cable gland (only for FS-20 DIN) (0) Option
		Code Explosion Proof Type / Head Housing Type
	N	For Weather Proof Type, FS-20R and FS-20 DIN
	S	Certificate on Housing Only / XDS & XDA: Class I, Groups A, B, C & D; Class II, Groups E, F & G; NEMA 4X
		Complete Ordering Code

Reminder before ordering:

In general, We DON't recommend using FS20 for the seawater application!
But, if it is necessary, please let us know before placing an order, we can customize the special magnet with lining to match up!