

THREAD TYPE THERMOWELLS

Technical Data

Welded type: WST, WLT,

Drilled bar stock type: BST, BLT, BTT, BTLT, BPST, BPLT

Material: SS304, SS316, SS316L, Monel, Hastelloy C 276, Brass, Carbon Steel, Titanium (special material available upon request)

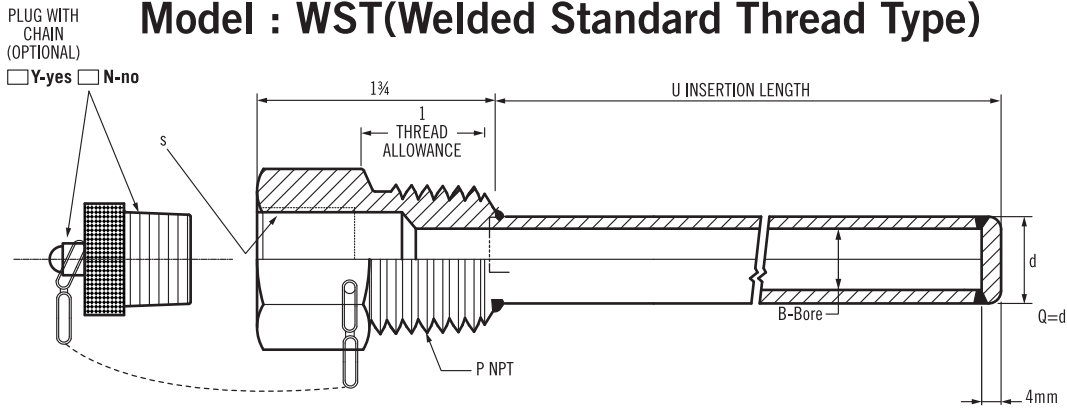
Process connection: 1/2" ~ 2" male available (special thread upon request)

Instrument connection: 1/2" NPT, 3/4" NPT Female available (special thread upon request)



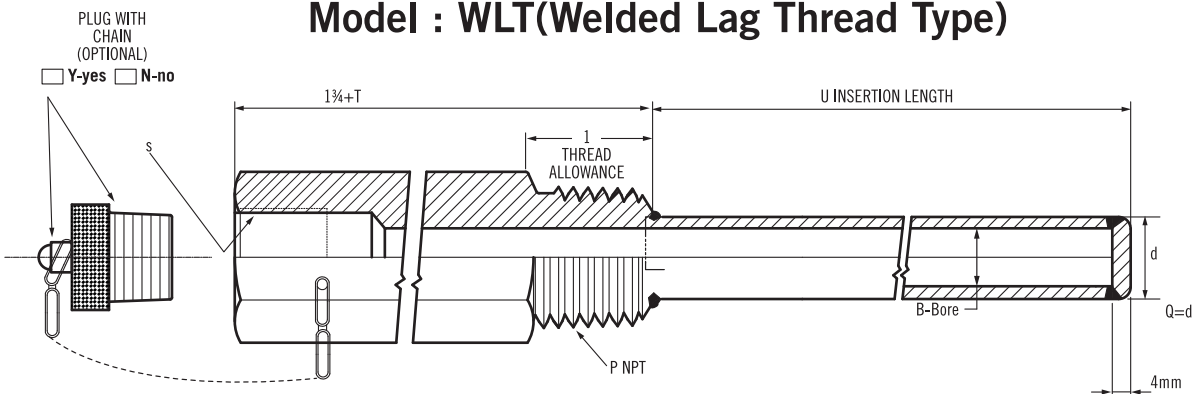
Thread Wells Series

Model : WST(Welded Standard Thread Type)



Tube Welded Type

Model : WLT(Welded Lag Thread Type)

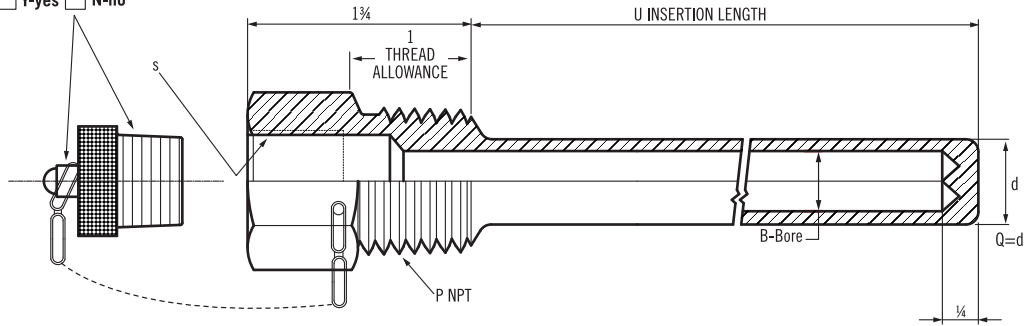


Tube Welded Type

Model : BST(Straight Standard Thread Type)

PLUG WITH CHAIN (OPTIONAL)

Y-yes N-no

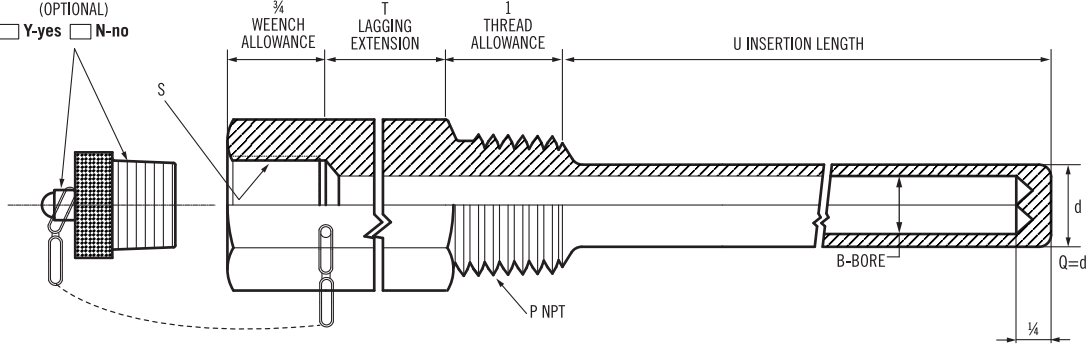


Bar Drilled Type

Model : BLT(Straight Lag Extension Thread Type)

PLUG WITH CHAIN (OPTIONAL)

Y-yes N-no

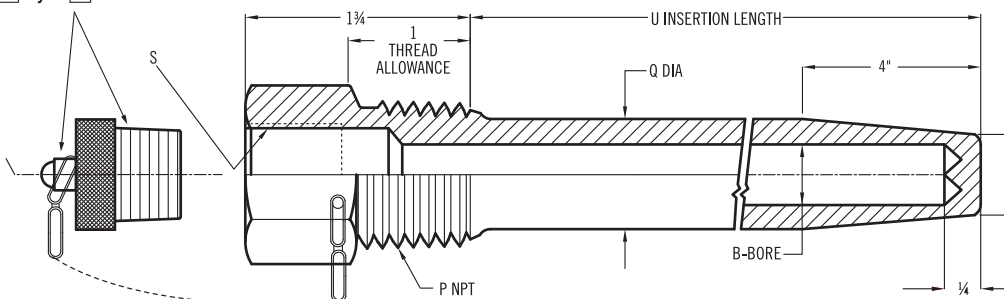


Bar Drilled Type

Model : BTT(Tapered Standard Thread Type)

PLUG WITH CHAIN (OPTIONAL)

Y-yes N-no

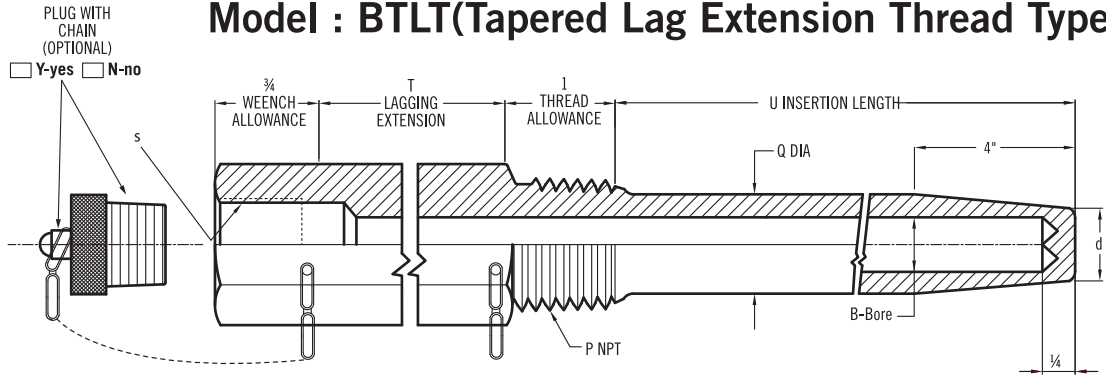


Bar Drilled Type

Standard: Q x d

- (1) 19 x 15mm
- (2) 25 x 22mm
- (3) 22 x 19mm

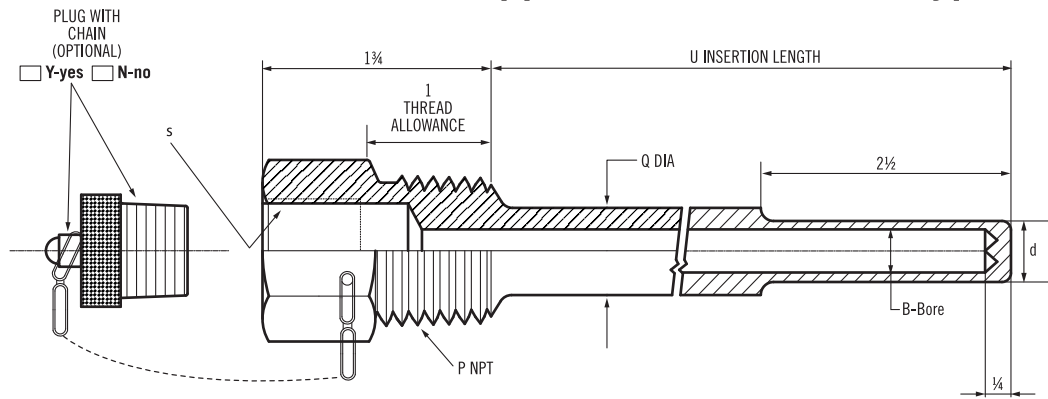
Model : BTLT(Tapered Lag Extension Thread Type)



Bar Drilled Type

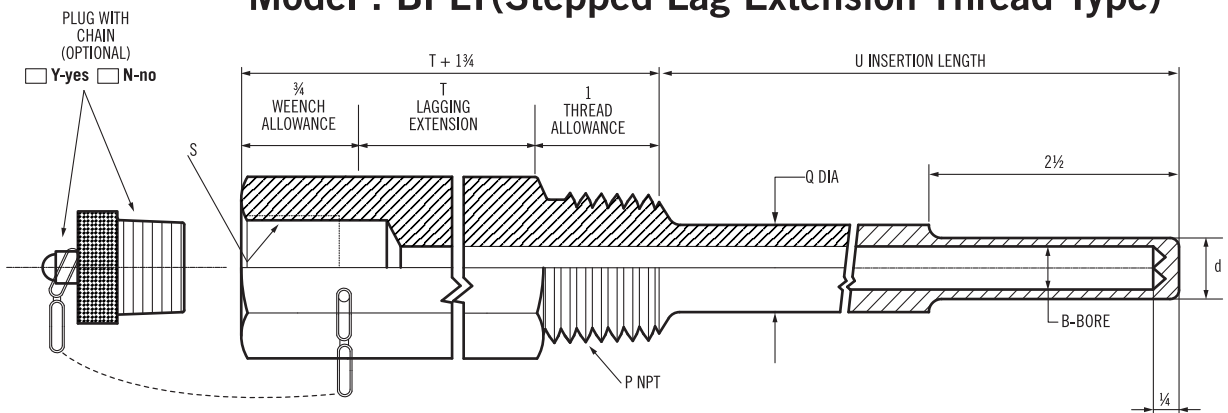
Standard: Q x d
 (1) 19 x 15mm
 (2) 25 x 22mm
 (3) 22 x 19mm

Model : BPST(Stepped Standard Thread Type)



Bar Drilled Type

Model : BPLT(Stepped Lag Extension Thread Type)



Bar Drilled Type

Ordering Information

Model	Configuration Style							
	WST	WLT	BST	BLT	BTT	BTLT	BPST	BPLT
<div style="display: flex; flex-direction: column; align-items: center; justify-content: space-around;"> <div style="width: 10px; height: 100px; border-left: 1px solid black;"></div> <div style="width: 10px; height: 100px; border-left: 1px solid black;"></div> <div style="width: 10px; height: 100px; border-left: 1px solid black;"></div> <div style="width: 10px; height: 100px; border-left: 1px solid black;"></div> <div style="width: 10px; height: 100px; border-left: 1px solid black;"></div> <div style="width: 10px; height: 100px; border-left: 1px solid black;"></div> <div style="width: 10px; height: 100px; border-left: 1px solid black;"></div> <div style="width: 10px; height: 100px; border-left: 1px solid black;"></div> <div style="width: 10px; height: 100px; border-left: 1px solid black;"></div> <div style="width: 10px; height: 100px; border-left: 1px solid black;"></div> </div>	Code		Material					
	CS	Carbon Steel			MO	Monel		
	S1	304 Stainless Steel			HC	Hastelloy C276		
	S2	316 Stainless Steel			Ti	Titanium		
	S3	316L Stainless Steel			OP	Option (please indicate material)		
	Code		Process Connection (P)					
			(1) ½" (2) ¾" (3) 1" (4) 1½" (5) 2" (6) option (please indicate size)					
	Code		S-Instrument Connection					
	A		½"NPT Female		0		option	
	B		¾"NPT Female					
Code		Lag Length "T"						
No		0		T6		6"		
T3		3"		Tn		option (please indicate length)		
Code		"Q" Diameter (mm)						
		(1) 25 (2) 22 (3) 19 (4) option (5) without Q						
Code		"d" Diameter (mm)						
		(1) 22 (2) 19 (3) 15 (4) option						
Code		"B" BORE Diameter						
		(1) Ø6 (2) Ø7 (3) Ø8 (4) Ø9 (5) Ø10 (0) option						
Code		"U" Insertion Length						
		Fill in the requested length: e.g. 300mm=300u						
Code		Plug with Chain						
Y		Yes						
N		No						
								Complete Ordering Code