

# Propeller Type Water Meter

MODEL : WP, WPS



WP-S1/S2 Series

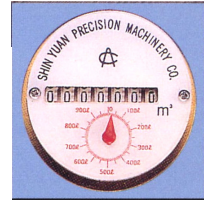


WP-FC Series

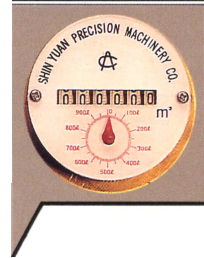


WPS-FCD Series

7 digits



6 digits

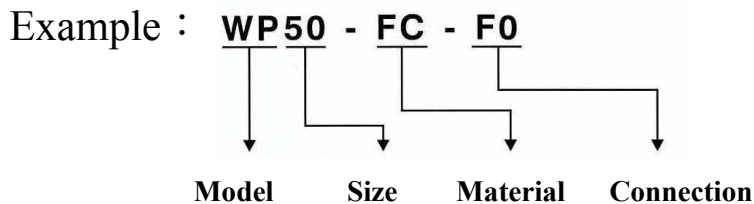


- Media : Clear Water 、 Wasted Water ( Strainer installing is needed )
- Accuracy : ±2%
- Temperature : 50℃ or 100℃
- Smallest readable quantity : 0.01M<sup>3</sup>

● SPECIFICATION

Size of Meter (m/m)		50 (2" )	65 (2 1/2" )	75 (3" )	100 (4" )	125 (5" )	150 (6" )	200 (8" )	250 (10" )	300 (12" )	350 (14" )	400 (16" )	450 (18" )	500 (20" )	600 (24" )
Length (mm)	WP	335	/	335	335	335	430 560	485 560	560	660	/	/	/	/	/
	WPS	207	207	207	/	/	300	350	450	500	500	600	600	600	800
Flow Range M <sup>3</sup> /Hr	Min.	5	6	6	8	17	20	23	28	35	58	81	104	125	185
	Cont.	16	30	40	80	150	188	240	320	450	667	878	1040	1267	1832
	Max.	24	50	66	126	204	288	360	500	720	1200	1386	1663	2080	2772

Remarks: When the meter needs to be fixed up, it's not necessary to disassemble all the meter from the pipe, it only needs to take off the upper part of the meter.



Model	Code		Description
WP, WPS			(6 or 7 digits totalizer)
Size (mm)	50		50mm (2" )
	65		65mm (2 1/2" )
	75		75mm (3" )
	100		100mm (4" )
	125		125mm (5" )
	150		150mm (6" )
	200		200mm (8" )
	250		250mm (10" )
	300		300mm (12" )
	350		350mm (14" )
	400		400mm (16" )
	450		450mm (18" )
500		500mm (20" )	
600		600mm (24" )	
Material	-FC		Body : Casting Iron ; Wetted parts : Brass ; Vane Wheel : P.P. Resin
	-FCD		Body : Ductile Iron ; Wetted parts : Brass ; Vane Wheel : P.P. Resin
	-S1		Body : SUS304 ; Wetted parts : SUS304 ; Vane Wheel : P.P. Resin
	-S2		Body : SUS316 ; Wetted parts : SUS316 ; Vane Wheel : P.P. Resin
Connection	-F0		JIS 10K FLANGE
	-F1		ANSI 150LB FLANGE
	-F2		JIS 7.5K FLANGE
Temperature	None		Normal Temp. (50℃)
	-H		High Temp. (100℃)

※.The above specifications will be revised any time without prior notification.