

MAGNETIC FLOAT LEVEL SWITCH

LS SERIES

The vertical float level switch consist of a float with a built in permanent magnet, and guide tube built in reed switch (one or more), when the float rise up or fall down in liquid that induct the reed switch to become ON or OFF contact function. The ON-OFF contact provide a liquid level control for application by request.

Technical Data

Material: wetted parts are available for SS304, SS316, PVC, PP, PVDF by requested. Multiple level point are available by requested for customer.

Enclosure housing: IP65 and IP67, Explosion proof, Weather proof

Straight style LS series: LS-simple type, WLS-IP65 & weather proof, ELS-explosion proof

Angle style series: LA-simple type, WLA-IP65 & weather proof, ELA-explosion proof

Connection size: Thread Type—1½" to 3", Flange Type—1½" to 4"

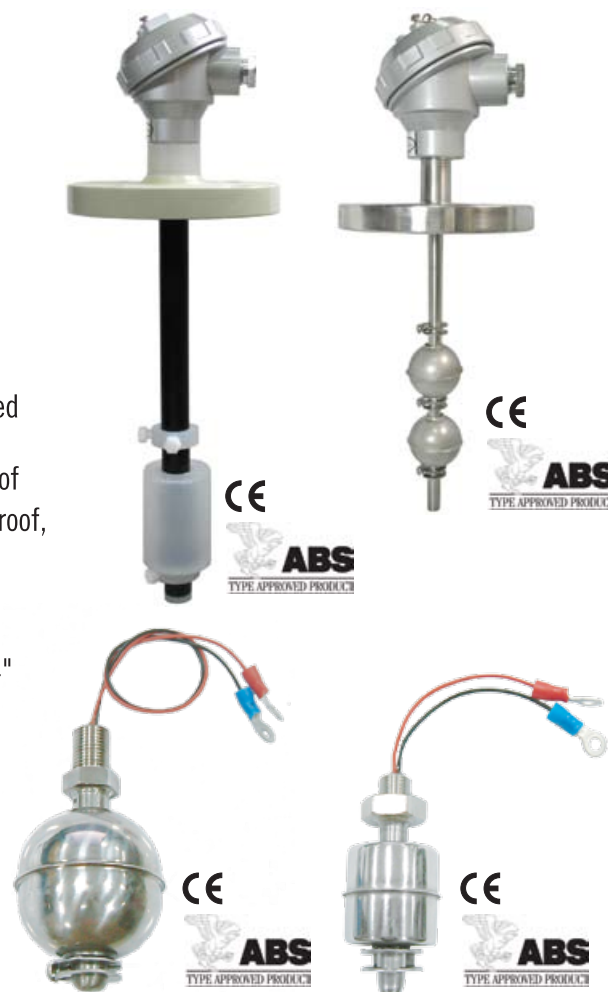
Switch Table

| Contact Form | A (SPST) | C (SPDT) |
|-------------------------|--------------|--------------|
| Switching Capacity Max. | 40 W/VA | 60 W/VA |
| Switching Voltage Max. | 230V AC/DC | 230V AC/DC |
| Switching Current Max. | 2A | 1A |
| Carrying Current Max. | 3A | 2A |
| Working Temperature | -40°C~+130°C | -40°C~+130°C |

*Special rate available on request.

Wiring Code Numbers

| One Float | | Two Float | | | Three Float | | | Four Float | | |
|---|--------|-----------|-----------------------------|--------|-------------|-----------------------------|------------------|------------------|-----------------------------|------------------|
| 1 | 2 | 3 | 4 | 5 | 6 | 7 | 8 | 9 | 10 | 11 |
| Suitable Float Size: $\varnothing 28, \varnothing 40, \varnothing 49, \varnothing 75$ | | | | | | | $\varnothing 40$ | $\varnothing 40$ | $\varnothing 28$ | $\varnothing 49$ |
| | | | | | | | $\varnothing 49$ | $\varnothing 49$ | $\varnothing 40$ | $\varnothing 75$ |
| | | | | | | | $\varnothing 75$ | $\varnothing 75$ | $\varnothing 49$ | |
| | | | | | | | | | $\varnothing 75$ | |
| | | | | | | | | | | |
| 1xSPST | 1xSPDT | 2xSPST | SPST (Common Wire Style) | 2xSPDT | 3xSPST | SPST (Common Wire Style) | 3xSPDT | 4xSPST | SPST (Common Wire Style) | 4xSPDT |



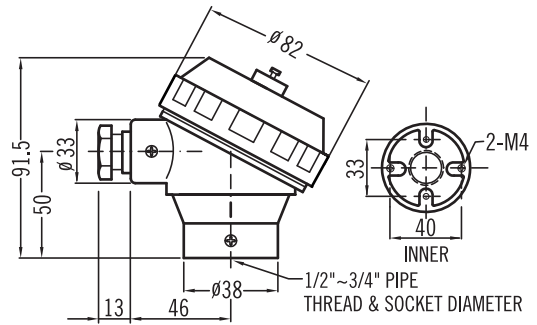


HN TYPE

Head Type Technical Data

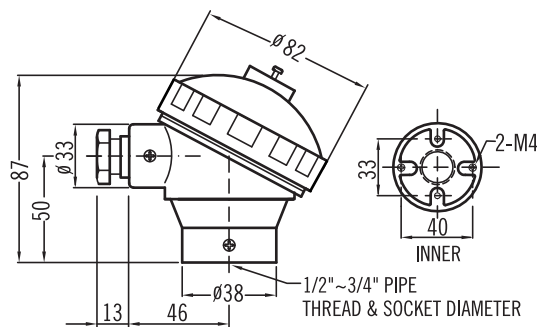
HN Type

Protection: IP67
Material: Aluminum Alloy
Weight: 264g
Protection tube connection: 1/2", 3/4" (PF, NPT, BSP), M20x1.5
Extension wire connection: 1/2", 3/4" (PF, NPT, BSP), M20x1.5
 Other specifications are available on request.



HP Type

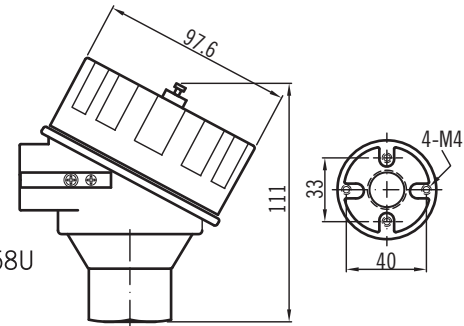
Protection: IP65
Material: Polypropylene
Weight: 112g
Protection tube connection: 1/2" NPT, 1/2" BSP
Extension wire connection: 3/4" NPT, M20x1.5
 Other specifications are available on request.



HP TYPE

XDS Type

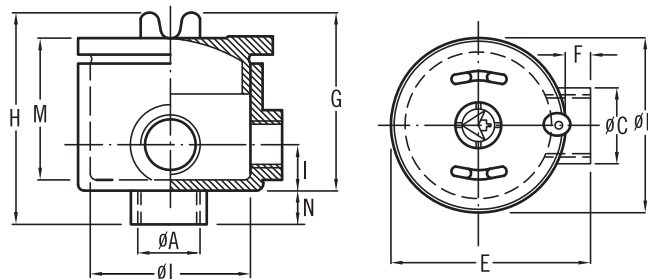
Material: 316 Stainless Steel
Weight: 127g
Protection tube connection: 1/2" PF, 3/4" PF, 1/2" NPT, 3/4" NPT, 1/2" BSP, 3/4" BSP, G1/2", G3/4", M20x1.5, M24x1.5, M25x1.5
Extension wire connection: M20x1.5, M25x1.5, 1/2" NPT, 3/4" NPT
EC certificate no.: BSI 07 ATEX 1532458U
ATEX directive code: II 2 G D
Standard code: Ex d IIC T6, Ex tD A21
 T100°C IP6x Ta= -20°C to +40°C
FM Approvals: XP/II/1/ABCD/T6; DIP/II,III/1/EFG/T6; Type 4X
 Explosionproof for Class I, Division 1, Groups A,B,C and D; and dust-ignitionproof for Class II, III Division 1, Groups E,F and G, hazardous (classified) locations; indoor / outdoor (NEMA Type 4X).



XDS TYPE

S2 Type

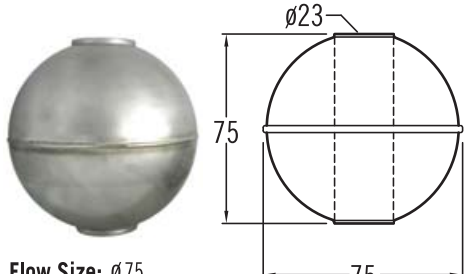
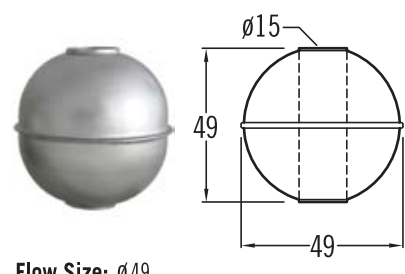
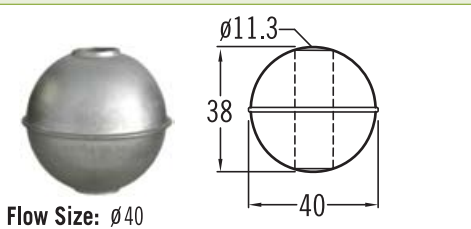
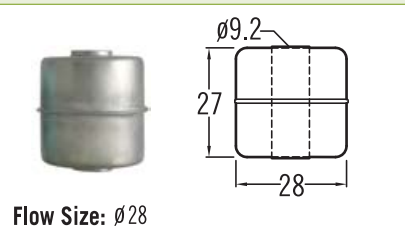
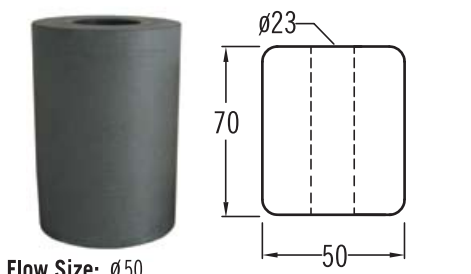
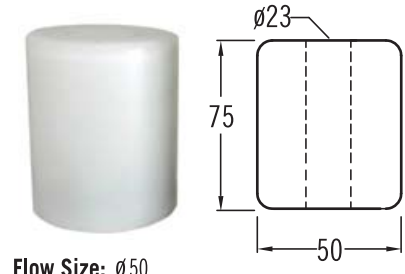
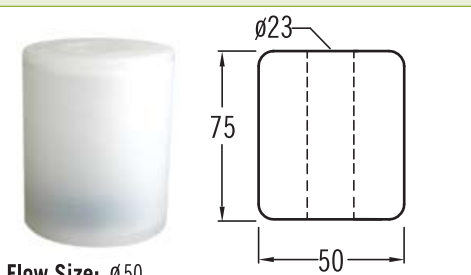
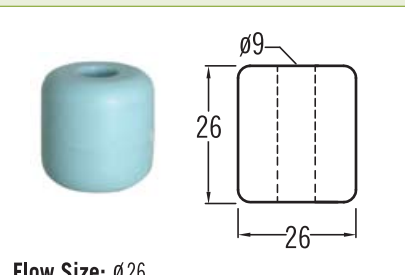
Protection: Explosion proof. EExdIIC T6 IP65
Material: Aluminum Alloy



S2 TYPE

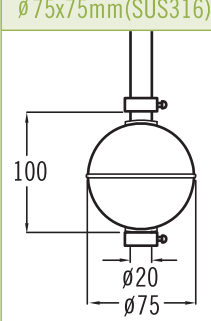
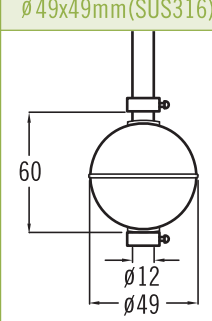
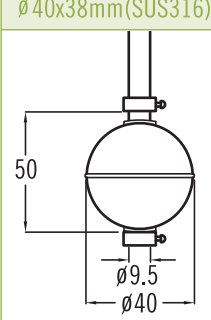
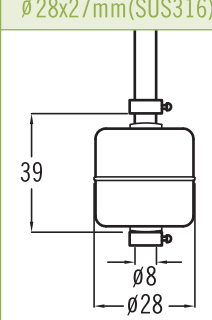
| Type | Dimensions | | | | | | | | | | | Terminal Block (on request) | Weight Gr. |
|------|------------|----|----|-----|----|----|----|----|----|----|----|-----------------------------|------------|
| | ØA | ØB | ØC | E | F | G | H | I | ØL | M | N | | |
| S2 | 3/4" | 90 | 38 | 100 | 10 | 78 | 92 | 24 | 76 | 69 | 14 | 4x4 mm ² | 510 |

Float Specification

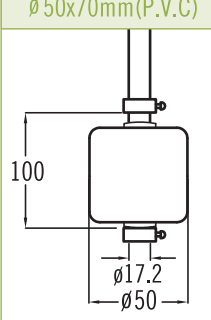
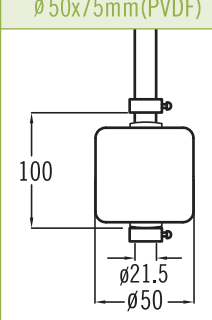
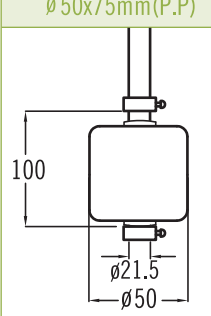
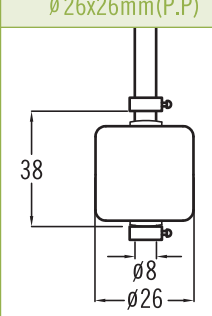
| | |
|---|--|
| <p>ø75x75mm (SUS316)</p>  <p>Flow Size: ø75 Max. Working Pressure: 30 kg/cm² Working S.G.: ≥ 0.68 The Guide Tube Size: ø20 Material: SUS316 Limited Operating Temperature: -20 ~ 140°C</p> | <p>ø49x49mm (SUS316)</p>  <p>Flow Size: ø49 Max. Working Pressure: 30 kg/cm² Working S.G.: ≥ 0.68 The Guide Tube Size: ø12 Material: SUS316 Limited Operating Temperature: -20 ~ 140°C</p> |
| <p>ø40x38mm (SUS316)</p>  <p>Flow Size: ø40 Max. Working Pressure: 30 kg/cm² Working S.G.: ≥ 0.8 The Guide Tube Size: ø9.5 Material: SUS316 Limited Operating Temperature: -20 ~ 140°C</p> | <p>ø28x27mm (SUS316)</p>  <p>Flow Size: ø28 Max. Working Pressure: 15 kg/cm² Working S.G.: ≥ 0.8 The Guide Tube Size: ø8 Material: SUS316 Limited Operating Temperature: -20 ~ 140°C</p> |
| <p>ø50x70mm (P.V.C)</p>  <p>Flow Size: ø50 Max. Working Pressure: 3 kg/cm² Working S.G.: ≥ 0.7 The Guide Tube Size: ø17.2 Material: P.V.C Limited Operating Temperature: 0~70°C</p> | <p>ø50x75mm (PVDF)</p>  <p>Flow Size: ø50 Max. Working Pressure: 5 kg/cm² Working S.G.: ≥ 0.8 The Guide Tube Size: ø21.5 Material: PVDF Limited Operating Temperature: 0~120°C</p> |
| <p>ø50x75mm (P.P)</p>  <p>Flow Size: ø50 Max. Working Pressure: 3 kg/cm² Working S.G.: ≥ 0.7 The Guide Tube Size: ø21.5 Material: P.P Limited Operating Temperature: 0~60°C</p> | <p>ø26x26mm (P.P)</p>  <p>Flow Size: ø26 Max. Working Pressure: 3 kg/cm² Working S.G.: ≥ 0.7 The Guide Tube Size: ø8 Material: P.P Limited Operating Temperature: 0~60°C</p> |

ON-OFF Gap

A. Metal

| | |
|--|--|
| <p>ø75x75mm (SUS316)</p>  | <p>ø49x49mm (SUS316)</p>  |
| <p>ø40x38mm (SUS316)</p>  | <p>ø28x27mm (SUS316)</p>  |

B. Non-Metal

| | |
|--|---|
| <p>ø50x70mm (P.V.C)</p>  | <p>ø50x75mm (PVDF)</p>  |
| <p>ø50x75mm (P.P)</p>  | <p>ø26x26mm (P.P)</p>  |

LS Series Dimension

LS-100 Series One Float Type

| LS-101 | LS-102 | LS-103 | LS-104 |
|--|--|---|---|
| <p>Lead Wire 300mm 1/8"PF Hex17 5 15 27 L₁ L ø8 ø28</p> <p>L=standard 48 mm L₁= standard 21 mm upon available on request</p> | <p>Lead Wire 300mm 3/8"PF Hex21 6 16 38 L₁ L ø9.5 ø40</p> <p>L=standard 68 mm L₁= standard 27 mm upon available on request</p> | <p>Lead Wire 300mm 3/8"PF Hex21 7 18 49 L₁ L ø12 ø49</p> <p>L=standard 80 mm L₁= standard 32 mm upon available on request</p> | <p>Lead Wire 300mm 1/2"PF Hex32 10 30 75 L₁ L ø20 ø75</p> <p>L=standard 110 mm L₁= standard 49 mm upon available on request</p> |

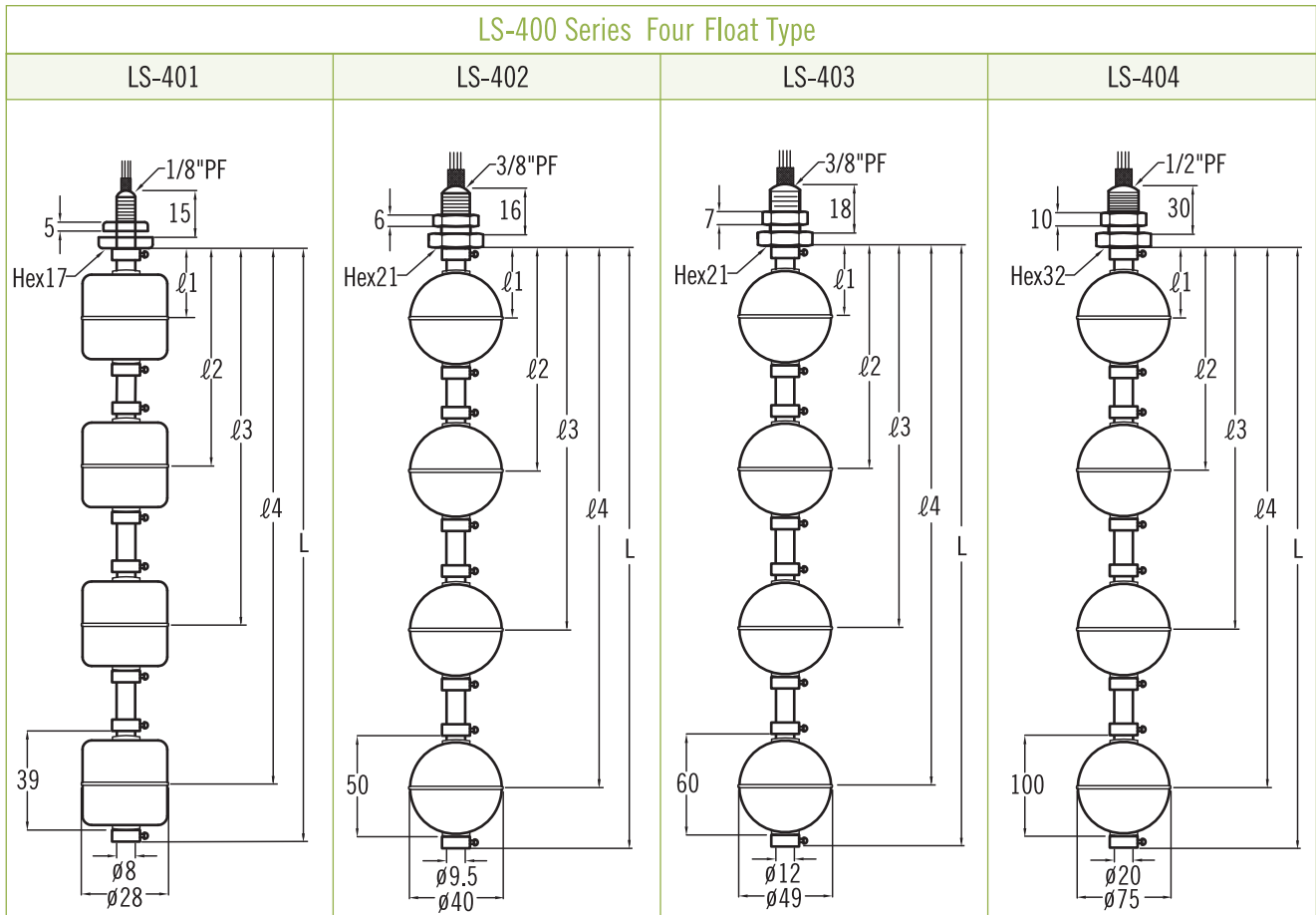
LS-200 Series Two Float Type

| LS-201 | LS-202 | LS-203 | LS-204 |
|---|---|--|---|
| <p>Lead Wire 300mm 1/8"PF Hex17 5 15 l₁ l₂ L ø8 ø28</p> | <p>Lead Wire 300mm 3/8"PF Hex21 6 16 l₁ l₂ L ø9.5 ø40</p> | <p>Lead Wire 300mm 3/8"PF Hex21 7 18 l₁ l₂ L ø12 ø49</p> | <p>Lead Wire 300mm 1/2"PF Hex32 10 30 l₁ l₂ L ø20 ø75</p> |

LS-300 Series Three Float Type

| LS-301 | LS-302 | LS-303 | LS-304 |
|---|---|--|---|
| <p>Lead Wire 300mm 1/8"PF Hex17 5 15 l₁ l₂ l₃ L ø8 ø28</p> | <p>Lead Wire 300mm 3/8"PF Hex21 6 16 l₁ l₂ l₃ L ø9.5 ø40</p> | <p>Lead Wire 300mm 3/8"PF Hex21 7 18 l₁ l₂ l₃ L ø12 ø49</p> | <p>Lead Wire 300mm 1/2"PF Hex32 10 30 l₁ l₂ l₃ L ø20 ø75</p> |

LS Series Dimension



Ordering Information

| LS | Code | Model |
|----|-------------|---|
| ↓ | ↓ | 101 201 301 401 |
| ↓ | ↓ | 102 202 302 402 |
| ↓ | ↓ | 103 203 303 403 |
| ↓ | ↓ | 104 204 304 404 |
| | Code | Material of Wetted Parts |
| | | (1) SS304 (2) SS316 (3) P.V.C (4) P.P (5) PVDF (6) Option |
| | Code | Contact Form |
| | | (A) A Type (C) C Type (O) Option |
| | Code | Wiring Code Numbers |
| | | Please refer to wiring code numbers table. |
| | Code | Float Size |
| | | (A) \varnothing 75(SS316) (B) \varnothing 49(SS316) (C) \varnothing 40x38(SS316) (D) \varnothing 28x27(SS316) (E) \varnothing 50x70(P.V.C) (F) \varnothing 50x75(PVDF) (G) \varnothing 50x75(P.P) (H) \varnothing 26x26(P.P) |
| | Code | Total Inserting Length |
| | | L= _____ mm |
| | Code | Setting Point & Switch Acting Functions |
| | | Please fill in the requested length and float rised ↑ ON or fall down ↓ ON |
| | | l_1 = _____ mm <input type="checkbox"/> ON |
| | | l_2 = _____ mm <input type="checkbox"/> ON |
| | | l_3 = _____ mm <input type="checkbox"/> ON |
| | | l_4 = _____ mm <input type="checkbox"/> ON |
| ↓ | ↓ | Complete Ordering Code |

WWW.NEW-FLOW.COM • TEL: 886-7-8135500 • FAX: 886-7-8225588 • Email: info@new-flow.com



WLS Series Dimension

WLS-100 Series One Float Type

| WLS-101 | WLS-102 | WLS-103 | WLS-104 |
|------------------------------------|------------------------------------|------------------------------------|------------------------------------|
| <p>Thread Connection Available</p> | <p>Thread Connection Available</p> | <p>Thread Connection Available</p> | <p>Thread Connection Available</p> |

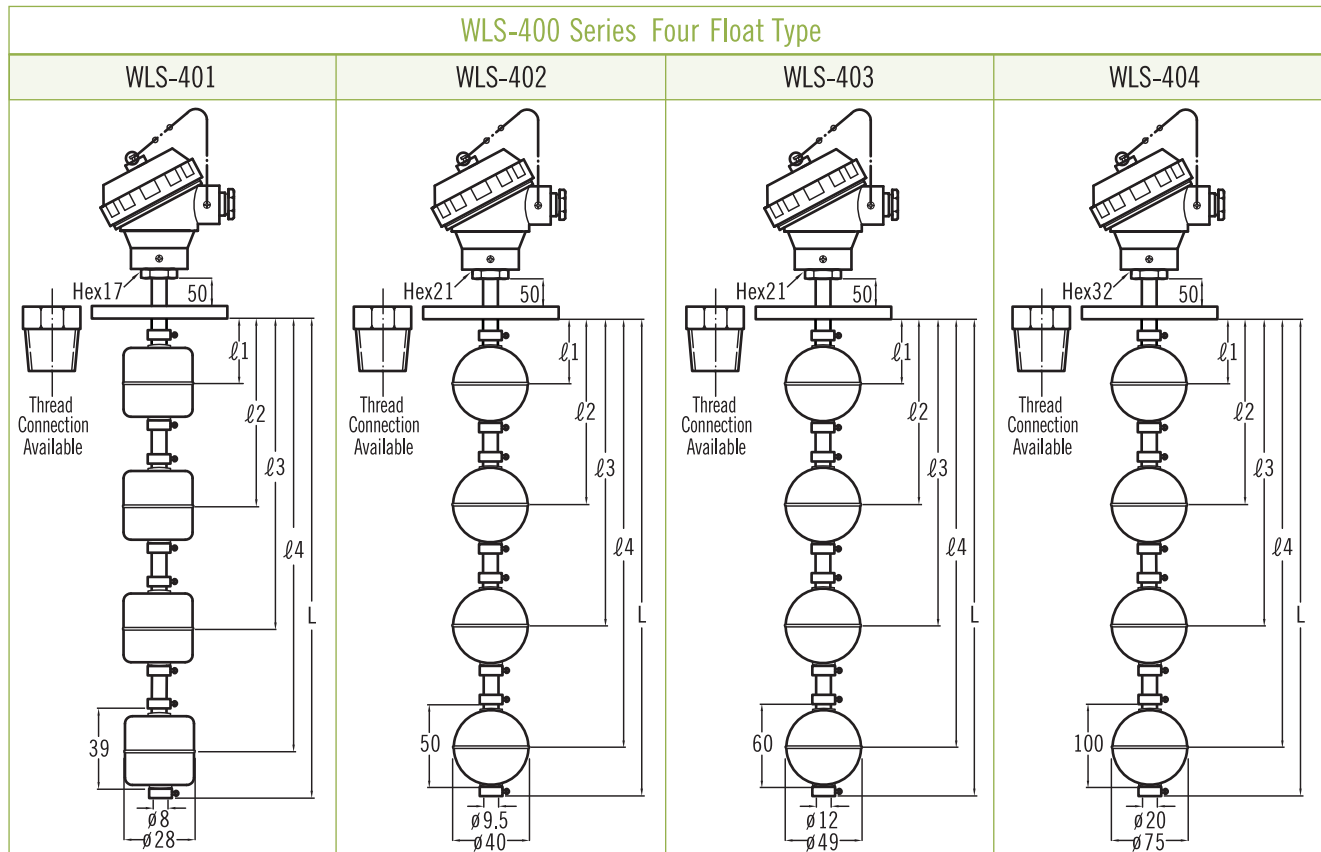
WLS-200 Series Two Float Type

| WLS-201 | WLS-202 | WLS-203 | WLS-204 |
|------------------------------------|------------------------------------|------------------------------------|------------------------------------|
| <p>Thread Connection Available</p> | <p>Thread Connection Available</p> | <p>Thread Connection Available</p> | <p>Thread Connection Available</p> |

WLS-300 Series Three Float Type

| WLS-301 | WLS-302 | WLS-303 | WLS-304 |
|------------------------------------|------------------------------------|------------------------------------|------------------------------------|
| <p>Thread Connection Available</p> | <p>Thread Connection Available</p> | <p>Thread Connection Available</p> | <p>Thread Connection Available</p> |

WLS Series Dimension



Ordering Information

| WLS | Code | Model |
|------|--------|--|
| | | 101 201 301 401 |
| | | 102 202 302 402 |
| | | 103 203 303 403 |
| | | 104 204 304 404 |
| Code | | Process Connection Size |
| A | 1½" | (for float $\varnothing 28$ and $\varnothing 40$ only) |
| B | 2" | (float $\varnothing 75$ not available) |
| C | 3" | |
| D | | Option |
| Code | | Process Connection Rating |
| | Thread | (A) PT (B) NPT (C) BSP (D) option |
| | Flange | (E) JIS 5K (F) JIS 10K (G) ANSI 150# (H) option |
| Code | | Material of Wetted Parts |
| | | (1) SS304 (2) SS316 (3) P.V.C (4) P.P (5) PVDF (6) option |
| Code | | Contact Form |
| A | A Type | |
| C | C Type | |
| O | | option |
| Code | | Wiring Code Numbers |
| | | Please refer to wiring code numbers table. |
| Code | | Head Type |
| | | (1) HN type (2) HP type (3) option |
| Code | | Float Size |
| | | (A) $\varnothing 75$ (SS316) (B) $\varnothing 49$ (SS316) (C) $\varnothing 40 \times 38$ (SS316) (D) $\varnothing 28 \times 27$ (SS316) |
| | | (E) $\varnothing 50 \times 70$ (P.V.C) (F) $\varnothing 50 \times 75$ (PVDF) (G) $\varnothing 50 \times 75$ (P.P) (H) $\varnothing 26 \times 26$ (P.P) |
| Code | | Conduit Connection |
| | | (A) ½"PF (B) ½"NPT (C) ¾"PF (D) ¾"NPT |
| Code | | Total Inserting Length |
| | | L= _____ mm |
| Code | | Setting Point & Switch Acting Functions |
| | | Please fill in the requested length and float raised \uparrow ON or fall down \downarrow ON |
| | | $\varnothing 1$ = _____ mm <input type="checkbox"/> ON |
| | | $\varnothing 2$ = _____ mm <input type="checkbox"/> ON |
| | | $\varnothing 3$ = _____ mm <input type="checkbox"/> ON |
| | | $\varnothing 4$ = _____ mm <input type="checkbox"/> ON |
| | | Complete Ordering Code |

ELS Series Dimension

ELS-100 Series One Float Type

| ELS-101 | ELS-102 | ELS-103 | ELS-104 |
|---------|---------|---------|---------|
| | | | |

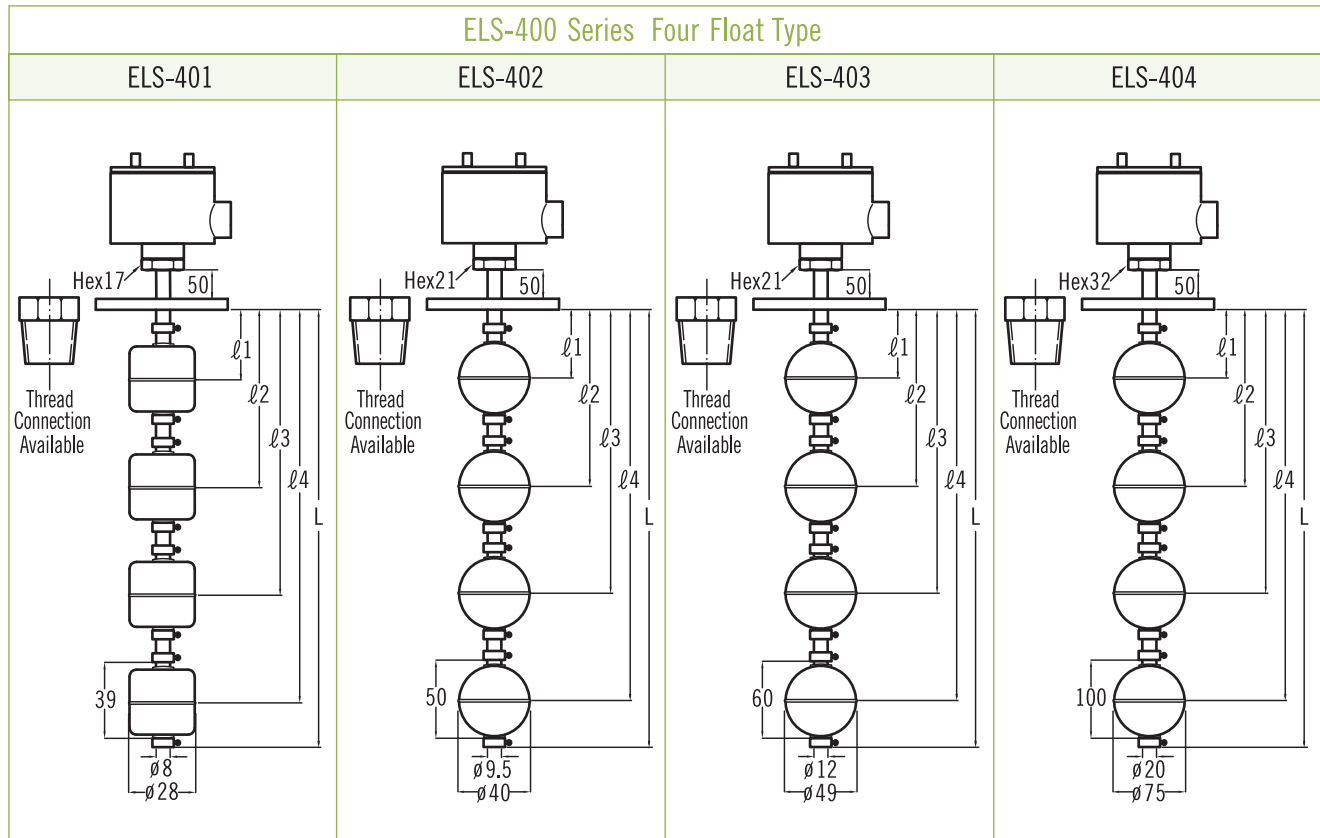
ELS-200 Series Two Float Type

| ELS-201 | ELS-202 | ELS-203 | ELS-204 |
|---------|---------|---------|---------|
| | | | |

ELS-300 Series Three Float Type

| ELS-301 | ELS-302 | ELS-303 | ELS-304 |
|---------|---------|---------|---------|
| | | | |

ELS Series Dimension

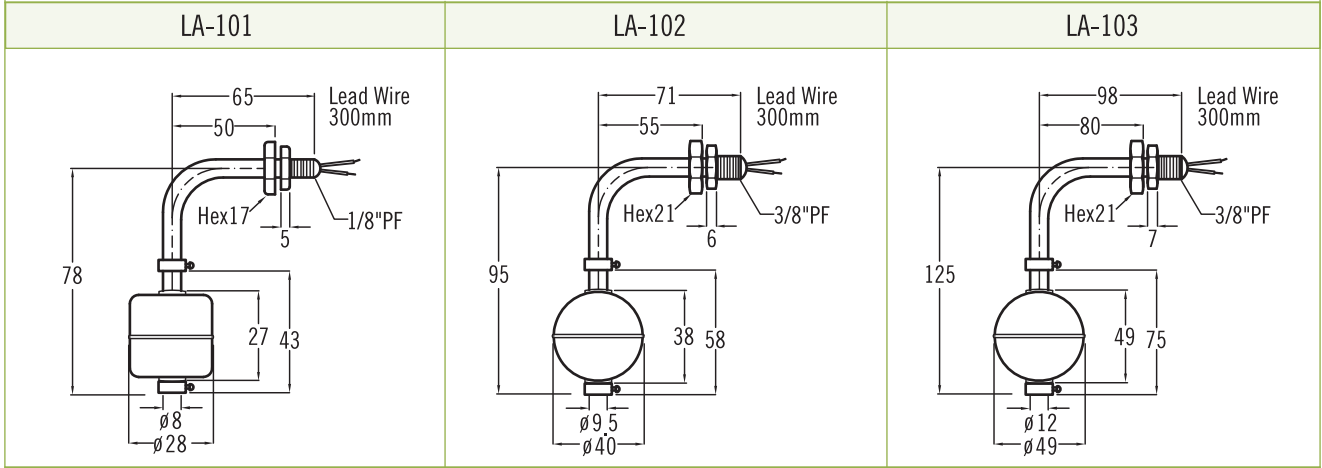


Ordering Information

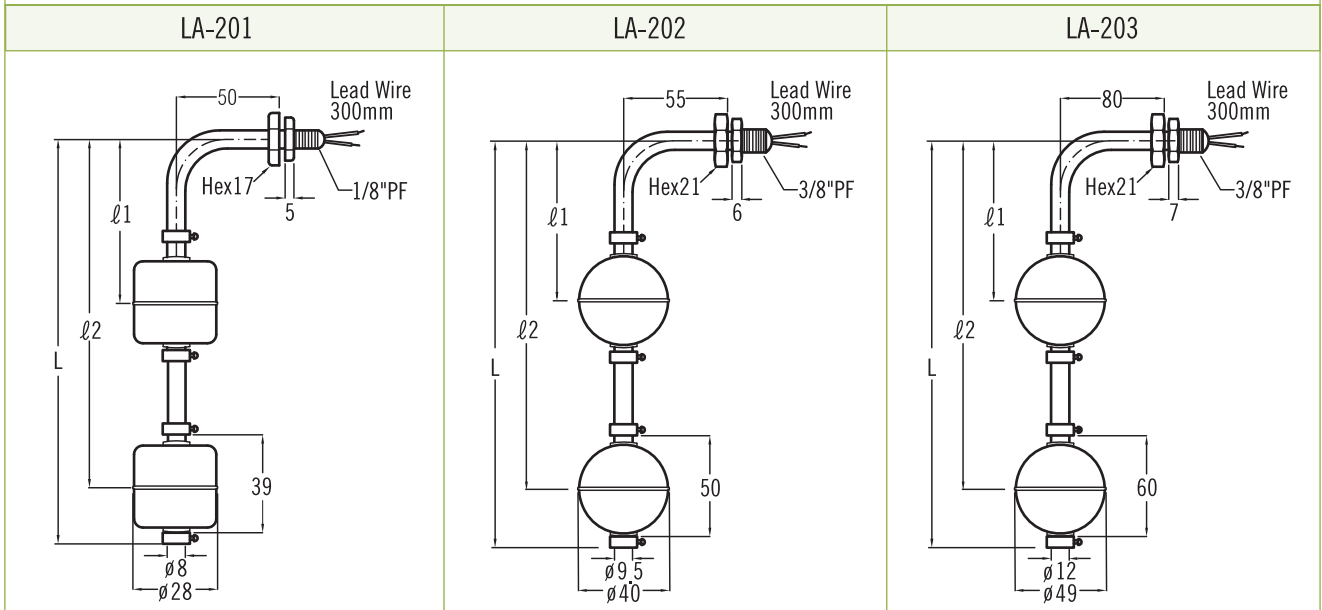
| ELS | Code | Model |
|-----|-------------|--|
| | | 101 201 301 401 |
| | | 102 202 302 402 |
| | | 103 203 303 403 |
| | | 104 204 304 404 |
| | Code | Process Connection Size |
| | A | 1½" (for float φ28 and φ40 only) |
| | B | 2" (float φ75 not available) |
| | C | 3" |
| | D | Option |
| | Code | Process Connection Rating |
| | Thread | (A) PT (B) NPT (C) BSP (D) option |
| | Flange | (E) JIS 5K (F) JIS 10K (G) ANSI 150# (H) option |
| | Code | Material of Wetted Parts |
| | | (1) SS304 (2) SS316 (3) P.V.C (4) P.P (5) PVDF (6) option |
| | Code | Contact Form |
| | A | A Type |
| | C | C Type |
| | O | option |
| | Code | Wiring Code Numbers |
| | | Please refer to wiring code numbers table. |
| | Code | Head Type |
| | | (1) XDS type (2) S2 type |
| | Code | Float Size |
| | | (A) φ75(SS316) (B) φ49(SS316) (C) φ40x38(SS316) (D) φ28x27(SS316) (E) φ50x70(P.V.C) (F) φ50x75(PVDF) (G) φ50x75(P.P) (H) φ26x26(P.P) |
| | Code | Conduit Connection |
| | | (A) ½"PF (B) ½"NPT (C) ¾"PF (D) ¾"NPT |
| | Code | Total Inserting Length |
| | | L= _____ mm |
| | Code | Setting Point & Switch Acting Functions |
| | | Please fill in the requested length and float rised↑ON or fall down↓ON ℓ1= _____ mm <input type="checkbox"/> ON ℓ2= _____ mm <input type="checkbox"/> ON ℓ3= _____ mm <input type="checkbox"/> ON ℓ4= _____ mm <input type="checkbox"/> ON |
| | | Complete Ordering Code |

LA Series Dimension

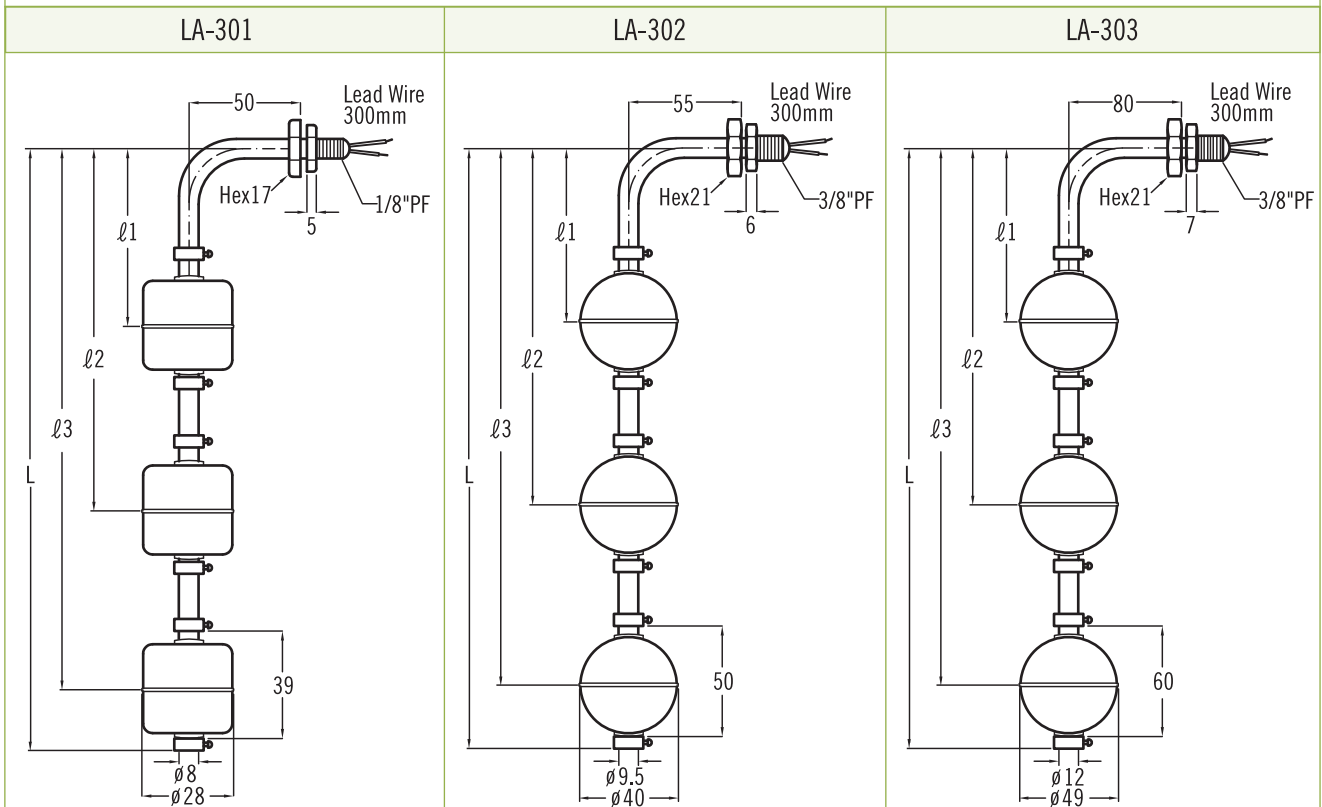
LA-100 Series One Float Type



LA-200 Series Two Float Type



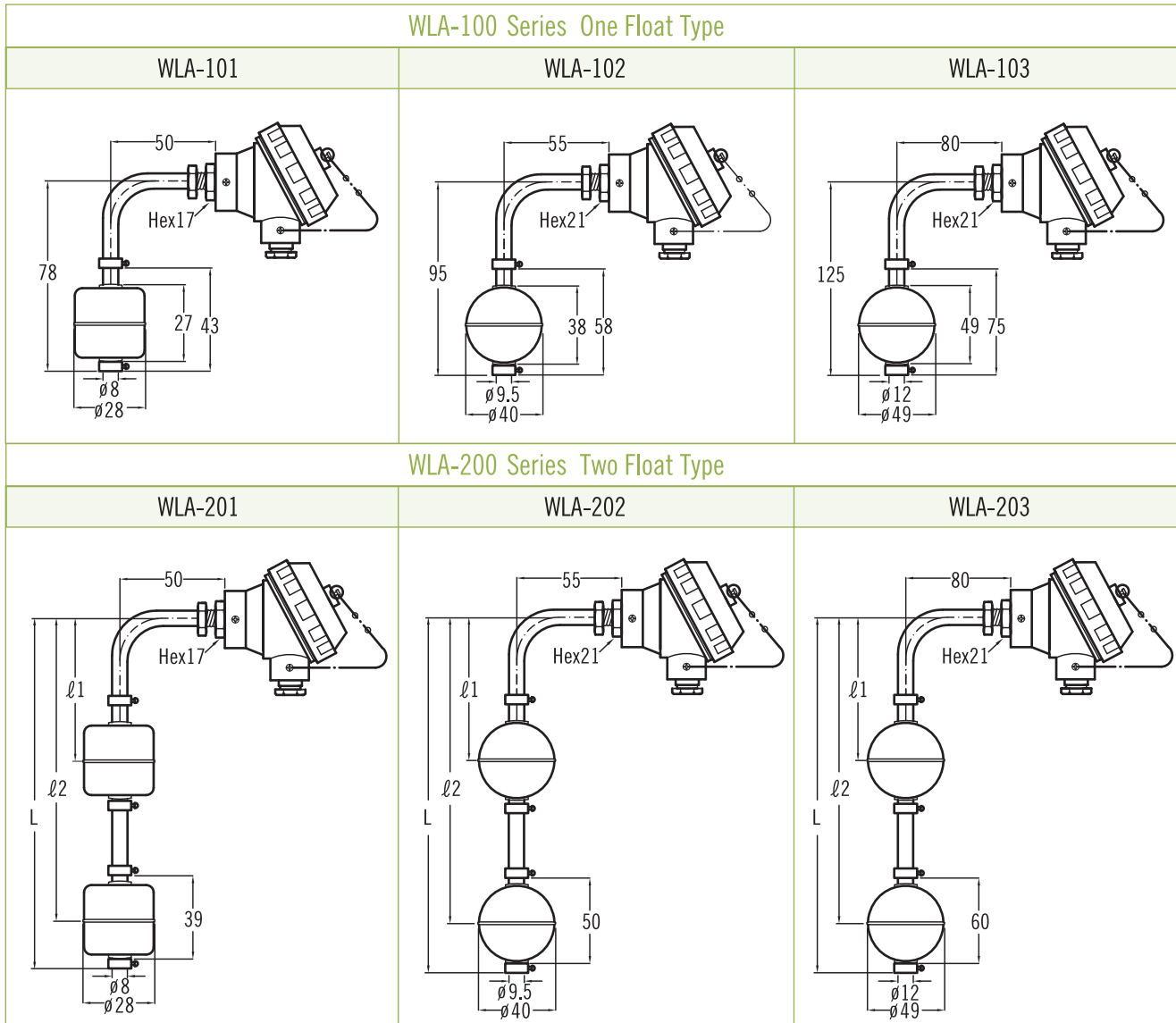
LA-300 Series Three Float Type



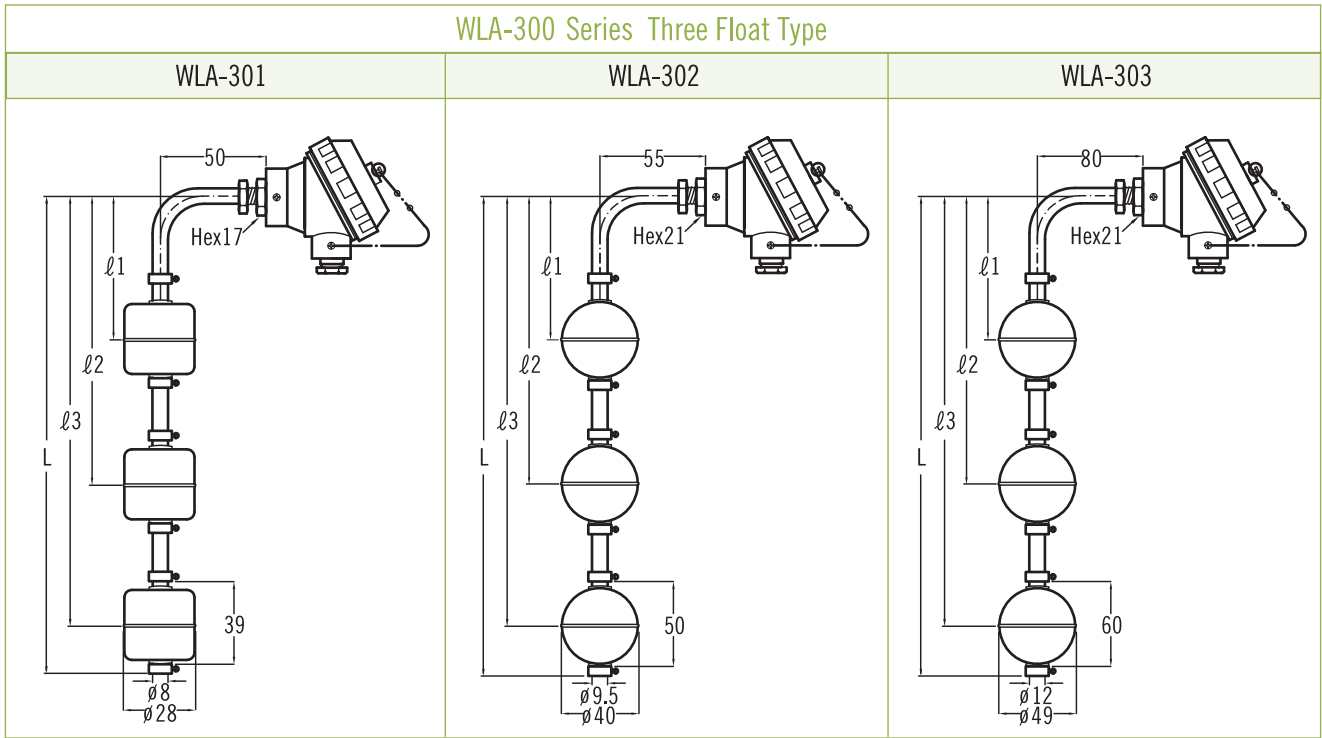
Ordering Information

| LA | Code | Model |
|----|-------------|--|
| | | 101 201 301 102 202 302 103 203 303 |
| | Code | Material of Wetted Parts |
| | | (1) SS304 (2) SS316 (3) P.V.C (4) P.P (5) PVDF (6) Option |
| | Code | Contact Form |
| | | (A) A Type (C) C Type (O) Option |
| | Code | Wiring Code Numbers |
| | | Please refer to wiring code numbers table. |
| | Code | Float Size |
| | | (A) ϕ 75(SS316) (B) ϕ 49(SS316) (C) ϕ 40x38(SS316) (D) ϕ 28x27(SS316) (E) ϕ 50x70(P.V.C) (F) ϕ 50x75(PVDF) (G) ϕ 50x75(P.P) (H) ϕ 26x26(P.P) |
| | Code | Total Inserting Length |
| | | L= _____ mm |
| | Code | Setting Point & Switch Acting Functions |
| | | Please fill in the requested length and float risen \uparrow ON or fall down \downarrow ON ℓ 1= _____ mm <input type="checkbox"/> ON ℓ 2= _____ mm <input type="checkbox"/> ON ℓ 3= _____ mm <input type="checkbox"/> ON |
| | | |
| | | Complete Ordering Code |

WLA Series Dimension



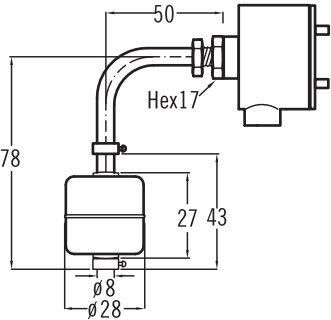
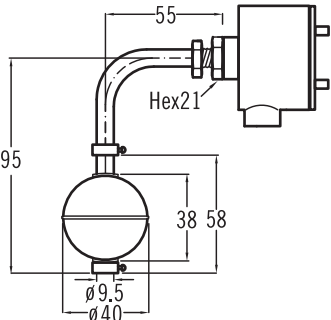
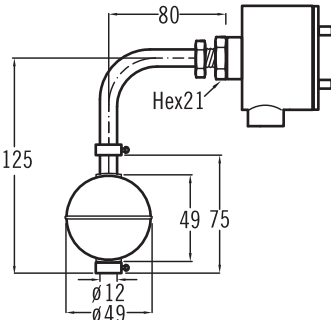
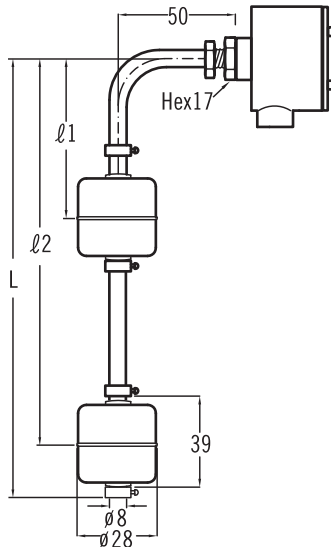
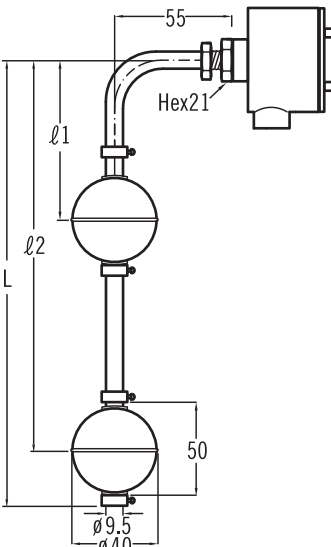
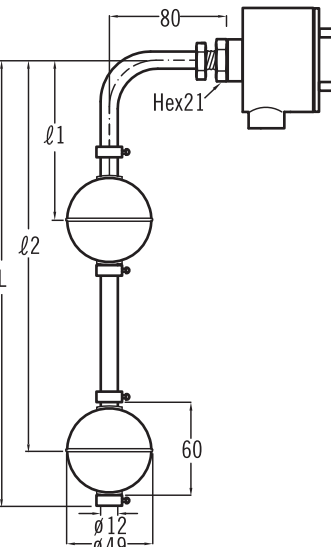
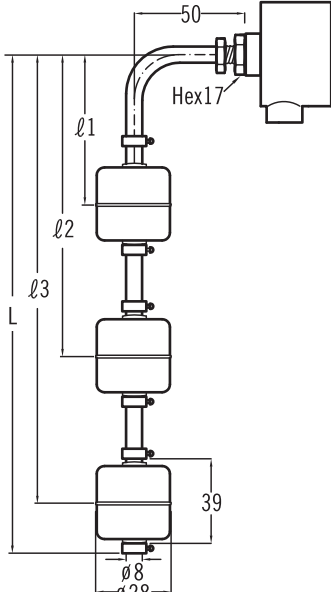
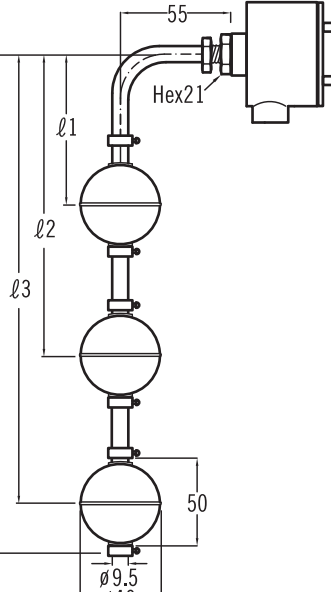
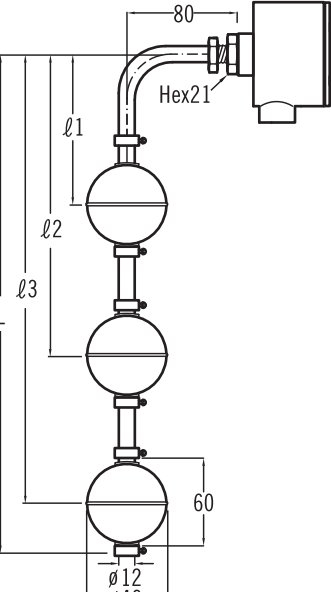
WLA-300 Series Three Float Type



Ordering Information

| WLA | Code | Model |
|-----|-------------|---|
| | | 101 201 301 |
| | | 102 202 302 |
| | | 103 203 303 |
| | Code | Material of Wetted Parts |
| | | (1) SS304 (2) SS316 (3) P.V.C (4) P.P (5) PVDF (6) Option |
| | Code | Contact Form |
| | | (A) A Type (C) C Type (0) Option |
| | Code | Wiring Code Numbers |
| | | Please refer to wiring code numbers table. |
| | Code | Head Type |
| | | (1) HN type (2) HP type (3) option |
| | Code | Float Size |
| | | (A) ϕ 75(SS316) (B) ϕ 49(SS316) (C) ϕ 40x38(SS316) (D) ϕ 28x27(SS316) (E) ϕ 50x70(P.V.C) (F) ϕ 50x75(PVDF) (G) ϕ 50x75(P.P) (H) ϕ 26x26(P.P) |
| | Code | Total Inserting Length |
| | | L= _____ mm |
| | Code | Setting Point & Switch Acting Functions |
| | | Please fill in the requested length and float risen ↑ ON or fall down ↓ ON l1= _____ mm <input type="checkbox"/> ON l2= _____ mm <input type="checkbox"/> ON l3= _____ mm <input type="checkbox"/> ON |
| | | Complete Ordering Code |

ELA Series Dimension

| ELA-100 Series One Float Type | | |
|---|---|--|
| ELA-101 | ELA102 | ELA-103 |
|  <p>Diagram of ELA-101 One Float Type. Dimensions: 50 (arm length), 78 (total height), 27 (float height), 43 (float diameter), Hex17 (float connection), $\phi 8$ (float inlet), $\phi 28$ (float outlet).</p> |  <p>Diagram of ELA102 One Float Type. Dimensions: 55 (arm length), 95 (total height), 38 (float height), 58 (float diameter), Hex21 (float connection), $\phi 9.5$ (float inlet), $\phi 40$ (float outlet).</p> |  <p>Diagram of ELA-103 One Float Type. Dimensions: 80 (arm length), 125 (total height), 49 (float height), 75 (float diameter), Hex21 (float connection), $\phi 12$ (float inlet), $\phi 49$ (float outlet).</p> |
| ELA-200 Series Two Float Type | | |
| ELA-201 | ELA-202 | ELA-203 |
|  <p>Diagram of ELA-201 Two Float Type. Dimensions: 50 (arm length), $\ell 1$ (float 1 height), $\ell 2$ (float 2 height), L (total height), 39 (float 2 diameter), Hex17 (float 1 connection), $\phi 8$ (float 1 inlet), $\phi 28$ (float 1 outlet).</p> |  <p>Diagram of ELA-202 Two Float Type. Dimensions: 55 (arm length), $\ell 1$ (float 1 height), $\ell 2$ (float 2 height), L (total height), 50 (float 2 diameter), Hex21 (float 1 connection), $\phi 9.5$ (float 1 inlet), $\phi 40$ (float 1 outlet).</p> |  <p>Diagram of ELA-203 Two Float Type. Dimensions: 80 (arm length), $\ell 1$ (float 1 height), $\ell 2$ (float 2 height), L (total height), 60 (float 2 diameter), Hex21 (float 1 connection), $\phi 12$ (float 1 inlet), $\phi 49$ (float 1 outlet).</p> |
| ELA-300 Series Three Float Type | | |
| ELA-301 | ELA-302 | ELA-303 |
|  <p>Diagram of ELA-301 Three Float Type. Dimensions: 50 (arm length), $\ell 1$ (float 1 height), $\ell 2$ (float 2 height), $\ell 3$ (float 3 height), L (total height), 39 (float 3 diameter), Hex17 (float 1 connection), $\phi 8$ (float 1 inlet), $\phi 28$ (float 1 outlet).</p> |  <p>Diagram of ELA-302 Three Float Type. Dimensions: 55 (arm length), $\ell 1$ (float 1 height), $\ell 2$ (float 2 height), $\ell 3$ (float 3 height), L (total height), 50 (float 3 diameter), Hex21 (float 1 connection), $\phi 9.5$ (float 1 inlet), $\phi 40$ (float 1 outlet).</p> |  <p>Diagram of ELA-303 Three Float Type. Dimensions: 80 (arm length), $\ell 1$ (float 1 height), $\ell 2$ (float 2 height), $\ell 3$ (float 3 height), L (total height), 60 (float 3 diameter), Hex21 (float 1 connection), $\phi 12$ (float 1 inlet), $\phi 49$ (float 1 outlet).</p> |

Ordering Information

| ELA | Code | Model | |
|---|-------------|---|---|
| <div style="display: flex; flex-direction: column; align-items: center; justify-content: space-around;"> <div style="width: 100%; border-left: 1px solid black; border-right: 1px solid black; height: 100%;"></div> <div style="width: 100%; border-left: 1px solid black; border-right: 1px solid black; height: 100%;"></div> <div style="width: 100%; border-left: 1px solid black; border-right: 1px solid black; height: 100%;"></div> <div style="width: 100%; border-left: 1px solid black; border-right: 1px solid black; height: 100%;"></div> <div style="width: 100%; border-left: 1px solid black; border-right: 1px solid black; height: 100%;"></div> <div style="width: 100%; border-left: 1px solid black; border-right: 1px solid black; height: 100%;"></div> <div style="width: 100%; border-left: 1px solid black; border-right: 1px solid black; height: 100%;"></div> <div style="width: 100%; border-left: 1px solid black; border-right: 1px solid black; height: 100%;"></div> <div style="width: 100%; border-left: 1px solid black; border-right: 1px solid black; height: 100%;"></div> <div style="width: 100%; border-left: 1px solid black; border-right: 1px solid black; height: 100%;"></div> </div> | | 101 201 301 102 202 302 103 203 303 | |
| | | Code | Material of Wetted Parts |
| | | | (1) SS304 (2) SS316 (3) P.V.C (4) P.P (5) PVDF (6) Option |
| | | Code | Contact Form |
| | | | (A) A Type (C) C Type (O) Option |
| | | Code | Wiring Code Numbers |
| | | | Please refer to wiring code numbers table. |
| | | Code | Head Type |
| | | | (1) XDS type (2) S2 type |
| | | Code | Float Size |
| | | (A) \varnothing 75(SS316) (B) \varnothing 49(SS316) (C) \varnothing 40x38(SS316) (D) \varnothing 28x27(SS316) (E) \varnothing 50x70(P.V.C) (F) \varnothing 50x75(PVDF) (G) \varnothing 50x75(P.P) (H) \varnothing 26x26(P.P) | |
| | Code | Total Inserting Length | |
| | | L= _____ mm | |
| | Code | Setting Point & Switch Acting Functions | |
| | | Please fill in the requested length and float rised ↑ ON or fall down ↓ ON l1= _____ mm <input type="checkbox"/> ON l2= _____ mm <input type="checkbox"/> ON l3= _____ mm <input type="checkbox"/> ON | |
| | | Complete Ordering Code | |